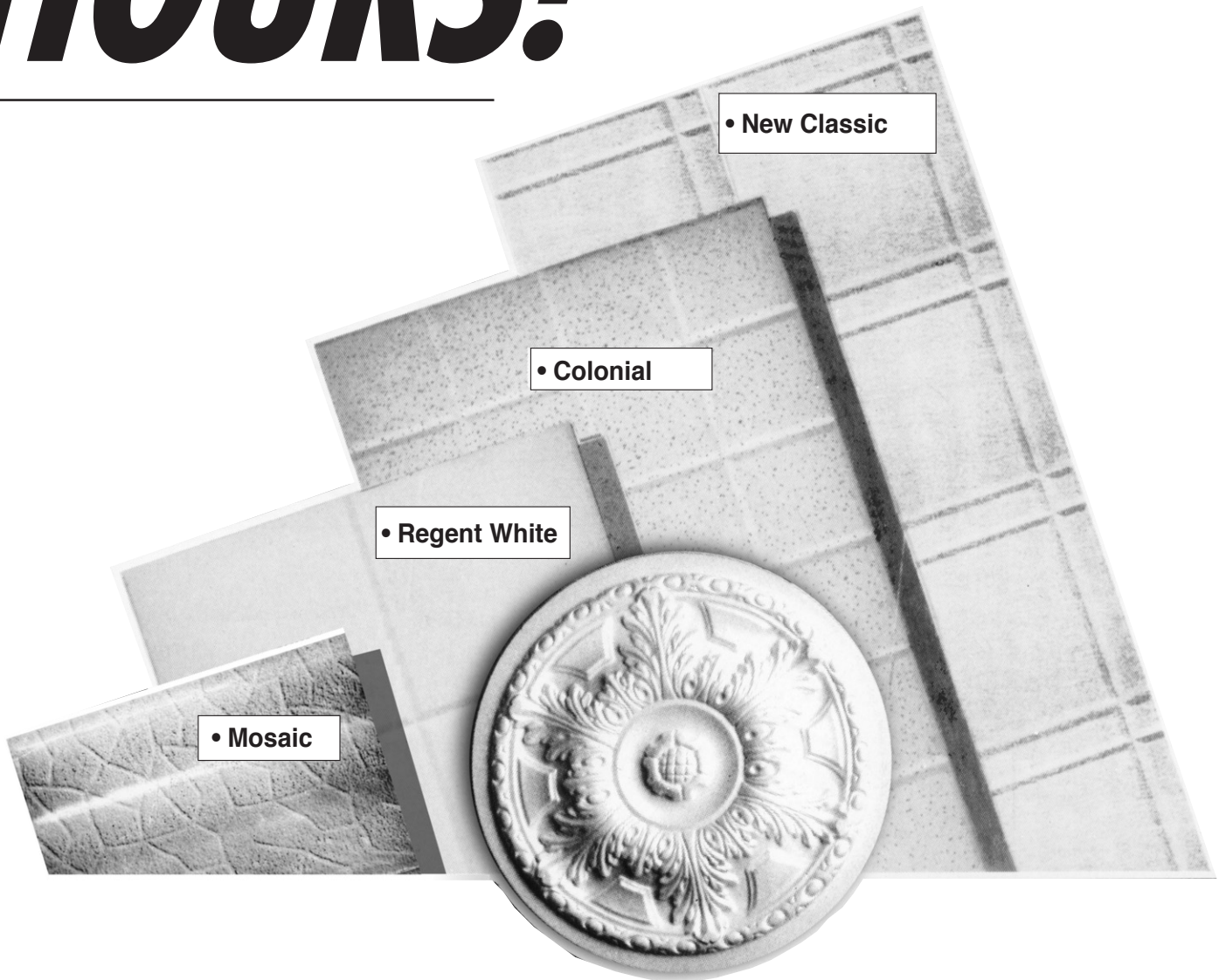
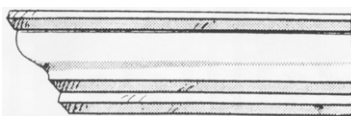

A NEW CEILING IN *HOURS!*



ADP CORNICE

Supplied in packs of 12 pieces.
Each length is 1200mm long, one
end of 8 pieces is pre-mitred



DO-IT-YOURSELF

Ceiling Tiles, Cornices &

- Quick and easy to install
- Minimum preparation required
- Can be painted (with water based paint)
- Contains no toxic chemicals
- Provides instant insulation
- Reduces noise levels
- Maintenance free
- Mould resistant
- Fire retardant
- Light Weight

CEILING TILES

The elegant range of ADP Ceiling tiles are so simple to install... you'll have a new feature ceiling in no time at all. Each tile is 600mm x 600mm and is manufactured from special grade fire retardant styrene which complies with Australian Safety Standards. Not only will ADP tiles enhance the appearance of your ceiling but your room will also gain improved insulation qualities and reduced noise levels. The tiles simply stick to your existing ceilings with SPECIAL ADP ADHESIVE... no need to fill holes and cracks! and the tiles can be painted with a water based paint if required.

CEILING ROSES

Add old world charm and character to any room with this traditional design in a light weight easy to install styrene ceiling rose that is held in place by the light cord ceiling attachment which makes it easy to remove and clean when necessary. The rose can be painted with a water based paint to match your ceiling.



ADP ADHESIVE



ADP The only recommended adhesive for use with

- **CEILING TILES**
- **CORNICE**
- **ROSES**

Clean up with water



AUSTRALIAN MADE

Instructions on reverse side

AUSTRALIAN DECORATOR PRODUCTS
A DIVISION OF THE FLAGSTAFF GROUP
254 NOLAN STREET UNANDERRA 2526
PHONE (02) 4272 1711 FAX (02) 4271 8419

www.flagstaffgroup.com.au

A.D.P. Australian Decorator Products

Exclusively distributed throughout Australia by The Flagstaff Group Limited

A.D.P. Material

A.D.P. Tiles Cornices & Roses are manufactured from a flame retardant modified grade of expanded polystyrene which neither contains, nor uses in its manufacture, any ozone depleting substances. The expanded polystyrene (E.P.S) we use is manufactured to Australian Standards AS 1366 part 3 1993.

Flammability Properties

The expanded polystyrene used contains a flame retardant additive to inhibit accidental ignition from small heat sources, however the material is combustible and should not be exposed to open flames.

Toxicity of Combustion Products

A CSIRO report comments that the toxicity of gases associated with the burning of expanded polystyrene material is no greater than that associated with the burning of timber. The combustion products released are Carbon Dioxide (CO₂), Water (H₂O) and Carbon (C) as soot. There is also a lesser amount of Carbon Monoxide (CO) released in combustion.

Personal Protection in Handling

a. Eyes

No special equipment is required due to the stable physical form of the product. However, as with all cutting or sanding, SAA approved safety glasses should be worn as a precaution.

b. Respiratory

No special equipment is required due to the stable physical form of the product. However, as with all cutting or sanding, SAA approved Dust mask should be worn as a precaution.

c. Hands and Arms

No special equipment is required due to the stable physical form of the product. However as with all cutting or sanding, safe tool handling precautions should be taken.

Thermal Insulation Properties

The low thermal conductivity of the material gives exceptional insulating properties and a remarkably high R value compared to most other insulating materials. Expanded polystyrene, (XPS or EPS), has thermal resistance from stabilised air trapped within the cellular structure.

Acoustic Properties

As E.P.S. has a closed cell structure it offers a limited absorption of airborne sounds. It is not intended as an acoustic insulation material.

Chemical Properties

a. Full Resistance

E.P.S. is **resistant** to virtually all aqueous media, including dilute acids and alkalis. In addition it is resistant to silicone oil and water miscible alcohols such as ethanol, methanol and isopropyl alcohol. The A.D.P. Tile Adhesive is the only recommended adhesive compound for long life, damage free application of the A.D.P. Decorator Ceiling Tiles.

b. Limited Resistance

The material has **limited resistance** to paraffin oil, vegetable oils, diesel fuel and vaseline. These substances may attack the surface after long term contact.

c. No Resistance

E.P.S. is **not resistant** to hydrocarbons, chlorinated hydrocarbons, ketones and esters. Paint containing thinners and solutions of synthetic adhesives are in this same category. Any painting of the tiles must be done with water based paints. Anhydrous acids such as glacial acetic acid or fuming sulphuric acid quickly destroy E.P.S.

Resistance to Fungi and Bacteria

Fungal attack has not been observed on E.P.S. and it does not support bacterial growth.

Resistance to Ants, Termites and Rodents

Since E.P.S. has no food value it does not attract ants, termites or rodents as a food source. However it is not a barrier to them and they can chew through it to reach a food source or establish a living space.

A.D.P. CEILING TILES

The ceiling tiles are 600mm x 600mm and available in packs of ten giving a coverage of 3.6 square metres for each pack of ten tiles.

Ceiling Tiles are available in the following styles:

Regent White
New Classic

Colonial
Mosaic

A.D.P. ADHESIVE

On average under normal conditions one 420gm cartridge is sufficient for 15 ceiling tiles.

IMPORTANT: A.D.P. is the only adhesive recommended. A.D.P. adhesive is not recommended for use on metal surfaces.

CEILING PREPARATION

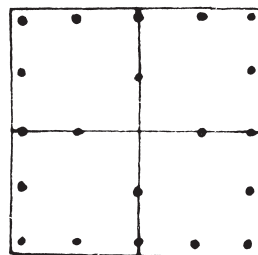
TOOLS REQUIRED

Stanley type knife, medium size spatula, rule, soft paint roller, chalk line, cotton gloves. Preparation (Keep hands clean at all times) Regardless of the material or method used to redecorate any ceiling, there are a few basic rules:

1. Preparation is of the utmost importance.
Remove all loose or flaking paint and dust.
2. If kalsomine or whitewash has previously been used or if the ceiling is powdery, proceed as number 1, and then bind back with a reliable sealer. When a ceiling is greasy, e.g. kitchens, wash down with sugar soap or equivalent. Rinse and dry the rub over ceiling with coarse sandpaper to ensure good adhesion.
3. Cracks or holes (within reason) need not be filled (one of many advantages of using A.D.P. ceiling tiles!)
4. Dropped or sagging ceilings should be nailed back as level as possible.

Apply adhesive approximately the size and thickness of a ten cent piece, leaving a margin of about 5mm from edges to ensure adhesive is not forced out when tile is applied to ceiling (see diagram indicated suggested positions and minimum spots required). Clean off excess with a wet cloth.

We do not recommend the use of A.D.P. ceiling tiles where the air space between roof and ceiling is restricted or where the underside of the ceiling is restricted or where the underside of the ceiling is exposed to direct sunlight such as verandahs and metal awnings, as extreme heat from these surfaces can cause a ceiling tile to melt at adhesion points



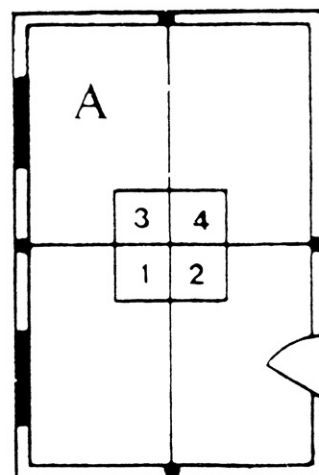
A.D.P. ceiling tiles, cornices and roses can be painted with water based paint. Do not allow solvent based paint or solvent to come into contact with the tiles.

CEILING TILE FIXING INSTRUCTIONS

Start from the centre and work outwards, This will compensate for ceilings which may not be true or square (especially on older houses).

To mark the centre, stretch coloured chalk strings from the mid point of opposite walls and snap the string. The chalk line will cross in the centre of the room. Fix the four tiles to the ceiling centre with their corners touching where the chalk lines cross with the edges meeting along the chalk lines (see diagram A). Press the tiles gently into position.

Continue to work outwards from the centre. Using a soft paint roller make certain all joints are a snug fit. This will also assist the adhesion of the tiles to the ceiling and eliminate finger marks. Trim the last tiles as necessary to fit against the walls.



A.D.P. ROSE

A traditional design that will add old world character to any room. the rose is held in place by the light cord ceiling attachment which makes it easy to remove and clean when necessary.

INSTALLATION-

Easily installed.
No nail or screw needed.

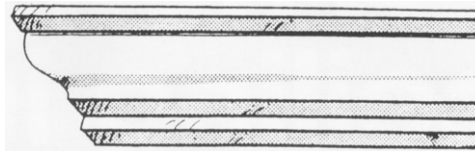
*(NOTE. Ensure you contact a licenced electrician or power authority for rules/laws concerning electrical work.)

1. Turn off power from mains electricity.
2. Disconnect existing lightfitting.*
3. Detach small cord cover.
4. Pierce hole in centre of ceiling rose and thread power cord through.
- 5 Push gently against ceiling and secure it with cord cover.
6. Paint ceiling rose to suit your decor.
7. Use water based paint only.



A.D.P. CORNICE

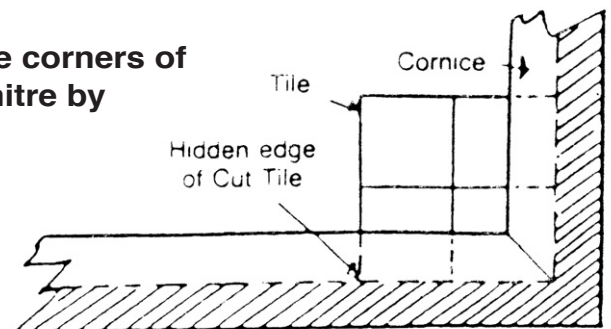
Supplied in packs equivalent to 14.4 lineal metres made up of four left and four right pre-square cut. In total there are 12 pieces



metres. Each pack is mitred pieces and four 1200mm long

INSTALLATION-

1. Apply small dabs of adhesive to back at approx 200mm intervals
2. Start from any corner and position first length. Gently push into required position and hold for 20 seconds.
3. Offer next length up to make sure mitres fit. If the corners of the room are out of square, simply adjust the mitre by cutting with a sharp knife.
4. To cut the cornice to length, mark and make a square cut. If in doubt, cut slightly longer and then trim to suite. Should the room be larger than 3.6m sq., fix all corners first and then insert square cut pieces into the centre



AUSTRALIAN DECORATOR PRODUCTS
A DIVISION OF THE FLAGSTAFF GROUP
254 NOLAN STREET UNANDERRA 2526
PHONE (02) 4272 1711 FAX (02) 4271 8419

www.flagstaffgroup.com.au